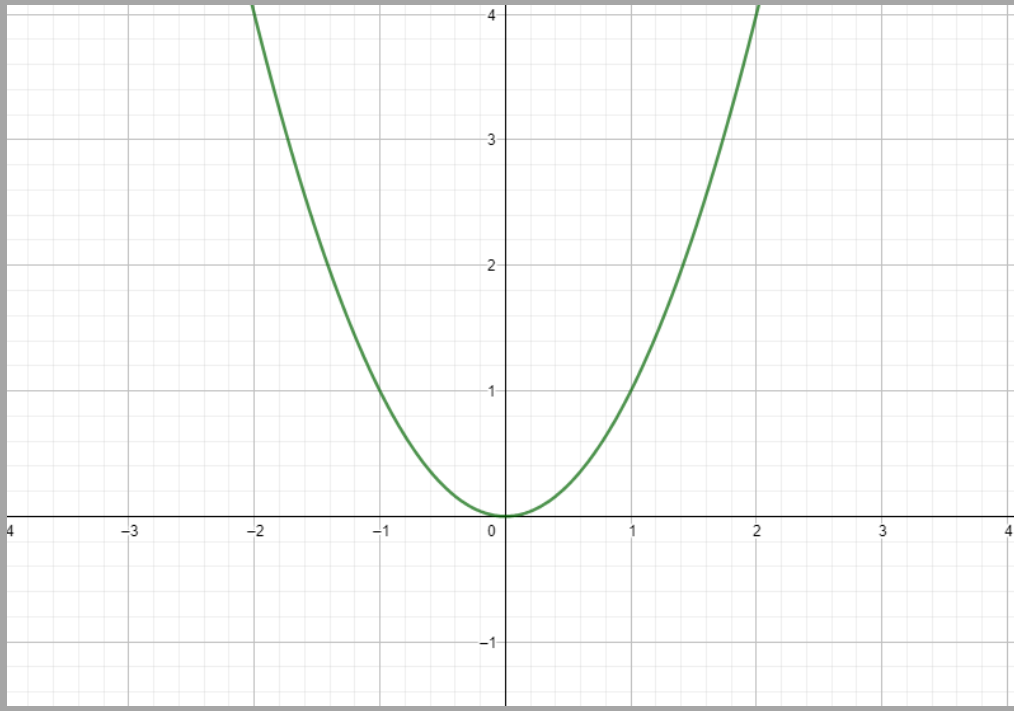
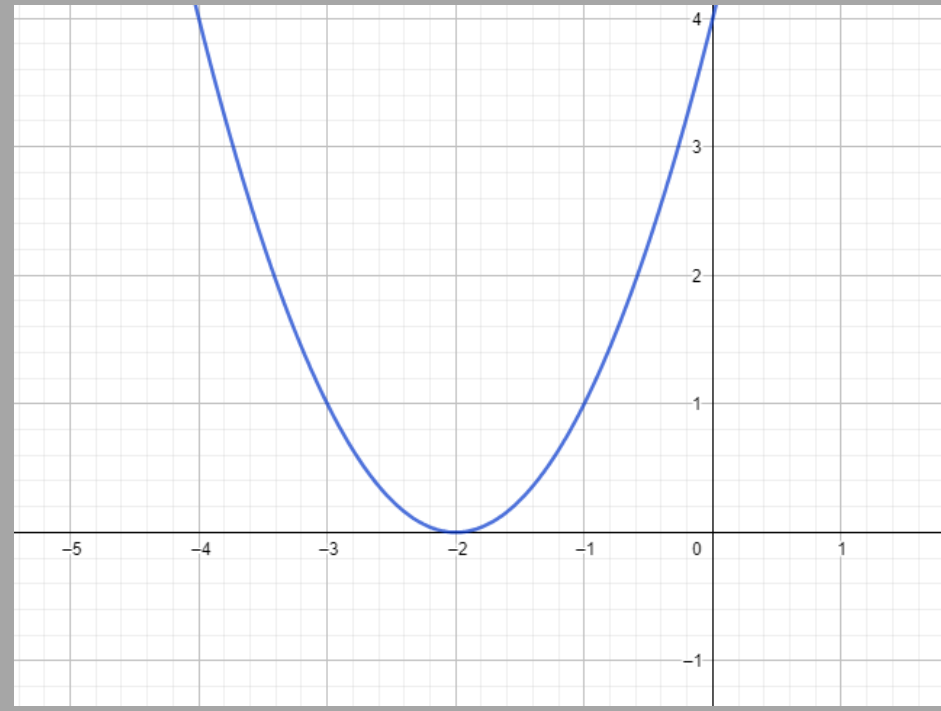


TRANSLACIJA GRAFA

PROMJENA VARIJABLE

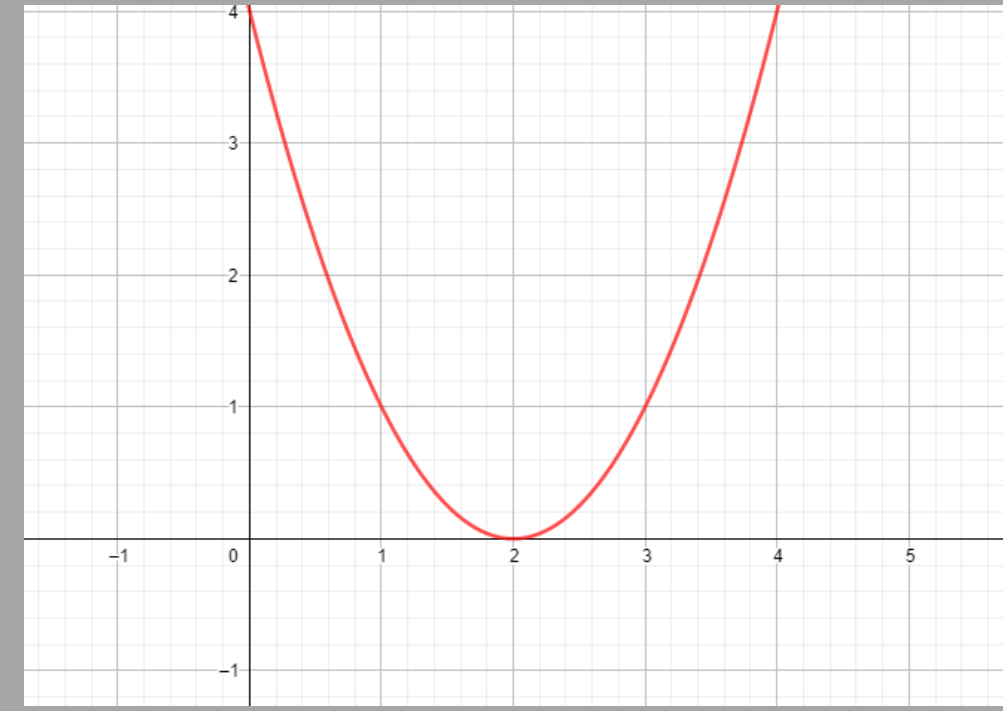


$$f(x) = x^2$$



$$g(x) = f(x+2) = (x+2)^2$$

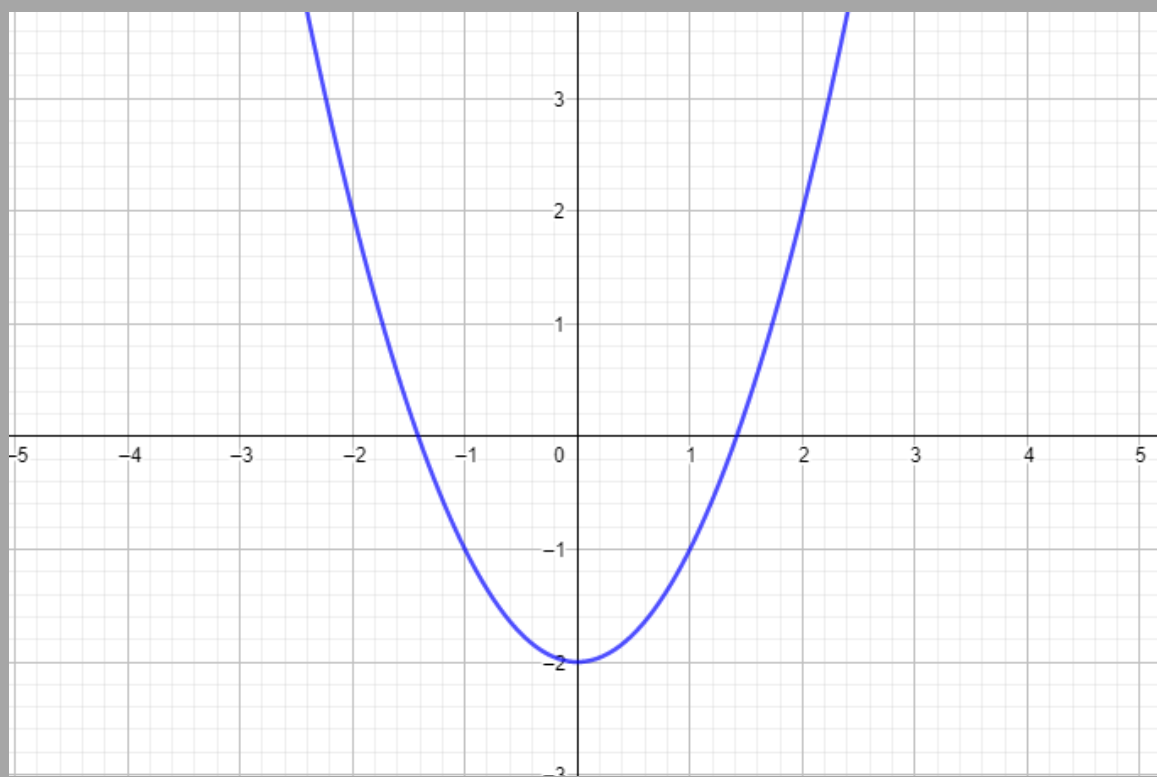
pomak horizontalno ulijevo za dva



$$g(x) = f(x-2) = (x-2)^2$$

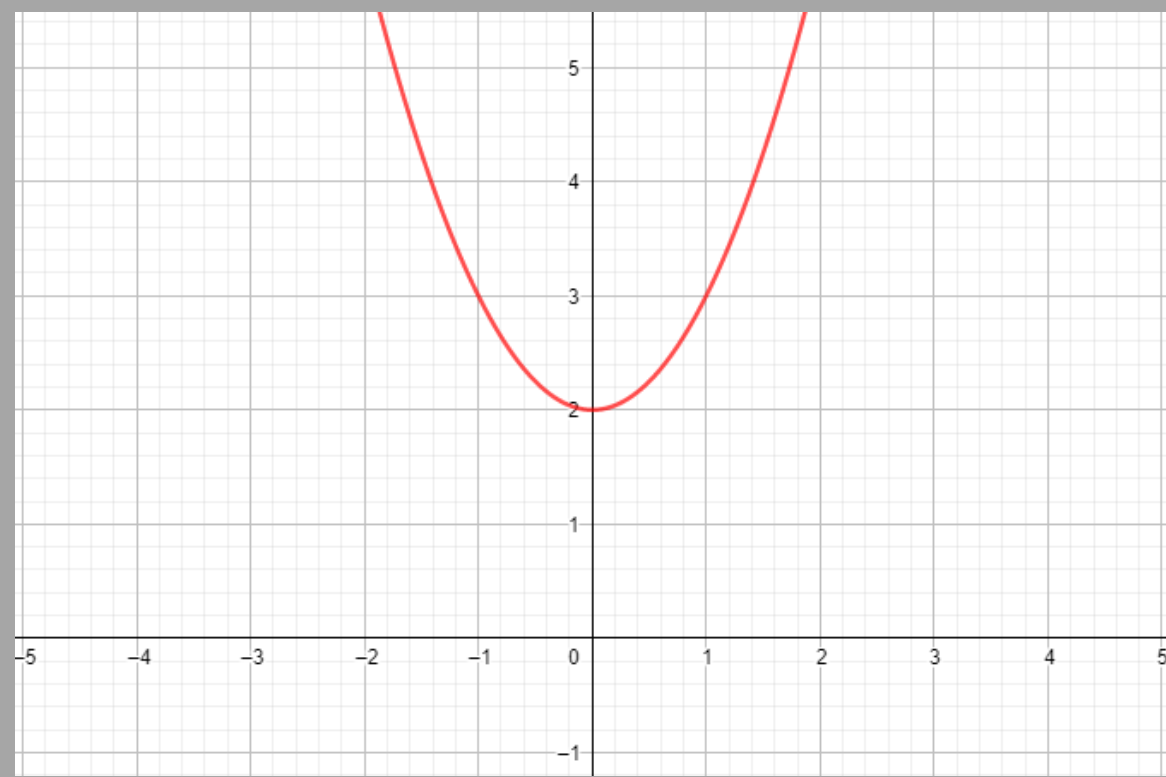
pomak horizontalno udesno za dva

PROMJENA VRIJEDNOSTI FUNKCIJE



$$g(x) = f(x) - 2 = x^2 - 2$$

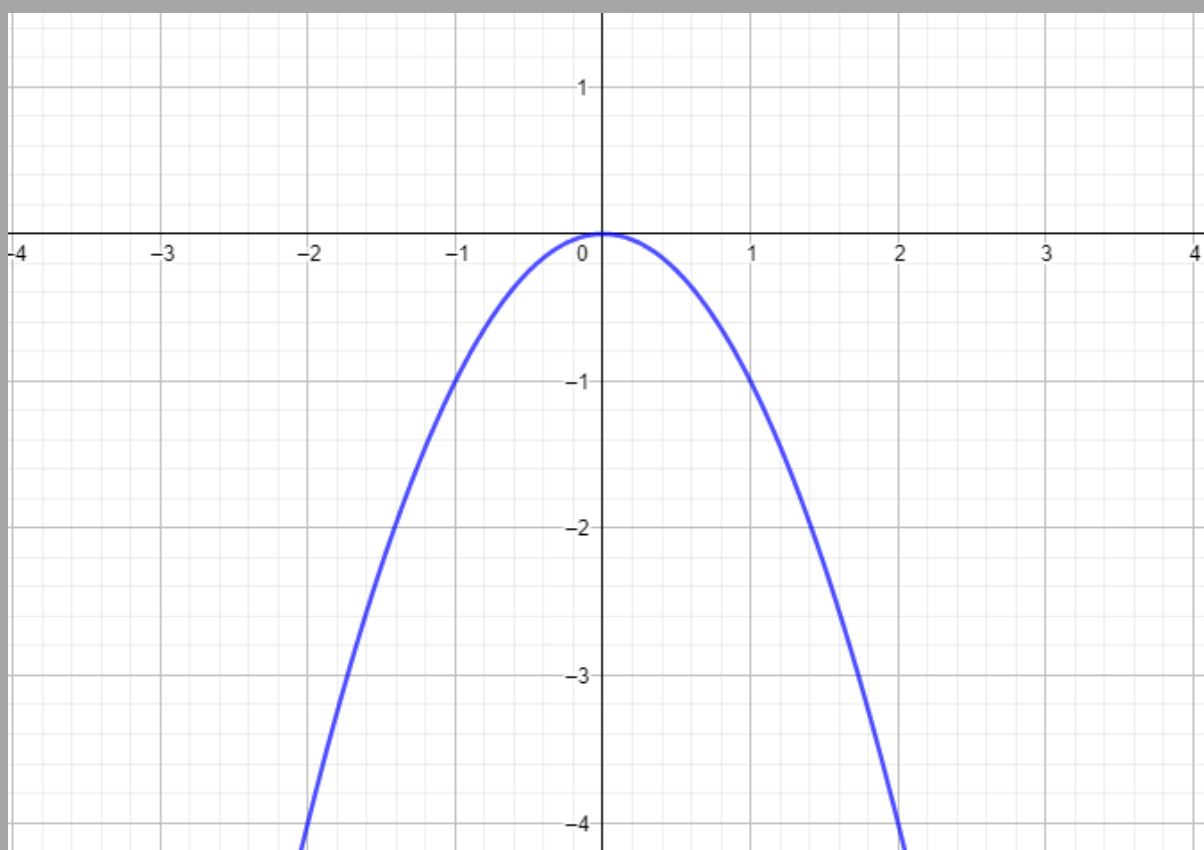
pomak vertikalno dolje za dva



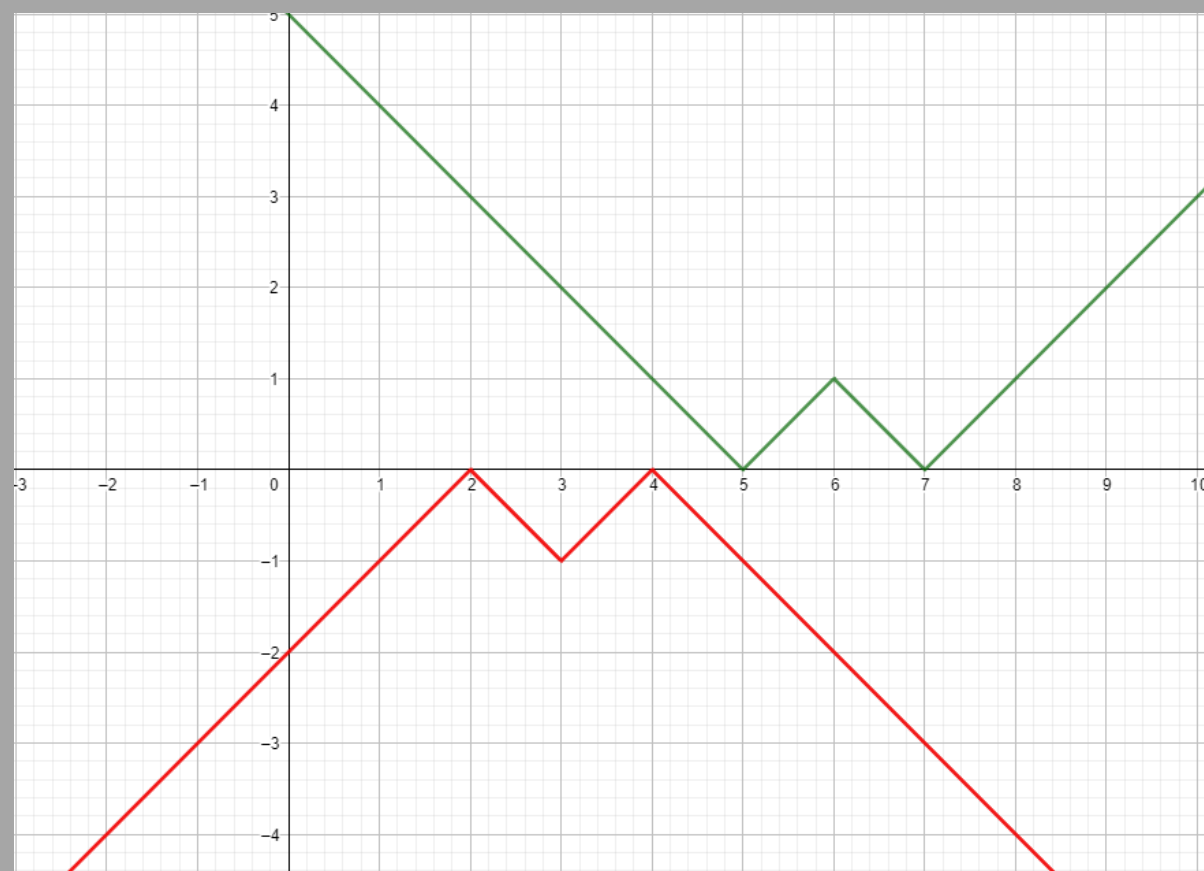
$$g(x) = f(x) + 2 = x^2 + 2$$

pomak vertikalno gore za dva

ZRCALJENJE PREKO X - OSI



$$g(x) = -f(x) = -x^2$$



$$f(x) = ||6-x|-1|$$

$$g(x) = -||3-x|-1|$$

$$g(x) = -f(x+3)$$

Translacija grafa funkcije f horizontalno ulijevo za 3
Zrcaljenje transliranog grafa preko x osi